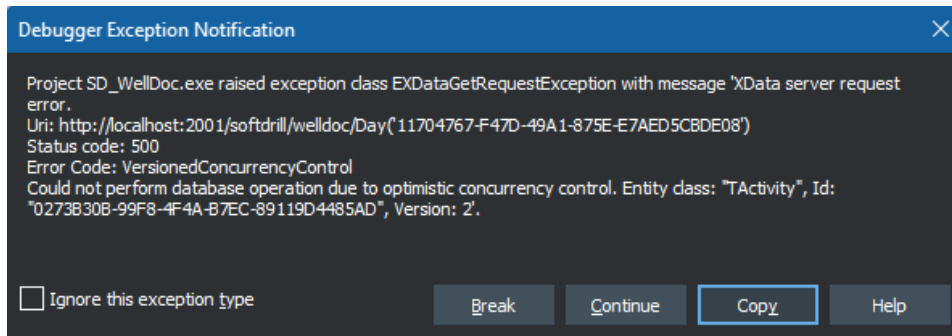


The bottom record was appended (inserted) and is not yet posted when the Parent is posted. Note the RowVersion of the top child (2).

Time From	Time To	Hours	Phase Code	Activity Code	Activity Class	Root Cause	BHA	MD End	Comments	Row Version Activity	Row Version Day
00:00		1.5	RMI	OTH	P		0	87.3	Some operation	2	6
01:30		1	RMI	OTH	P		0	87.3	Waiting	1	6
02:30		1.25	RMI	OTH	PN		0	87.3	Some problem		6

The error message confirms the top child is causing the issue, yet this record was never touched!



This is the call stack

